

# Navigating Electronic Case Reporting Challenges

## A White Paper from Dynamic Health IT, Your Strategic Partner

Dynamic Health IT (DHIT) addresses the challenges of Electronic Case Reporting (eCR) through its Dynamic eCR Gateway. With eCR as a mandatory aspect of MIPS Promoting Interoperability, DHIT's solution streamlines the reporting process.

May 2024

### Introduction

Now that Electronic Case Reporting (eCR) is a required part of MIPS Promoting Interoperability (PI), both EHR vendors and providers are looking for the best platform and process for eCR reporting. As you probably know, eCR is the automated generation and transmission of reports of reportable conditions from electronic health records (EHRs) to public health agencies for review and action. Certain providers can still claim an exclusion under Traditional MIPS and some Alternative Payment Model (APM) entities are exempt from PI reporting but nonetheless, eCR reporting is more critical now than ever.

The eCR Now FHIR App integrates with healthcare providers' EHR systems. This integration leverages FHIR (Fast Healthcare Interoperability Resources) standards to access and utilize patient data for case reporting. It is open source, free of cost, and can more rapidly enable eCR rollout by simplifying the EHR product preparation process.

### The Problem

Healthcare providers and EHR vendors encounter challenges when it comes to electronic case reporting:

1. **Certified Software:** Providers must use software certified for the 170.315(f)(5) "Transmission to public health agencies – electronic case reporting" criterion.
2. **Engaging and Reporting with a PHA:** Certified software is one piece of the puzzle but each Public Health Agency (PHA) will have their own requirements for data formatting, content and connectivity. The Center for Disease Control (CDC) collects eCR data at a national level but there are also state agencies that accept eCR data. Regardless of what PHA you choose, certified software is never "plug and play" for eCR reporting.
3. **Data Collection, Formatting and Transmission:** Ensuring data consistency and adherence to reporting standards is a significant hurdle for both vendors and providers. EHRs struggle to:
  - Maintain the list of reportable codes,
  - Trigger the correct format of CDA, and
  - Provide transport for the CDA document.

### The Solution: Dynamic eCR Gateway

Dynamic Health IT (DHIT), a leader in ONC-certified bolt-on software and HL7 FHIR interoperability has developed the Dynamic eCR Gateway to streamline the process of electronic case reporting. Here's how it works:

1. **Automated Data Extraction:** Dynamic eCR Gateway integrates with EHR systems and extracts relevant case data automatically. Providers no longer need to manually compile and submit reports.
2. **Real-time Transmission:** The gateway securely transmits case data to the CDC in real time using the open source eCR Now FHIR app. This ensures timely reporting, meets MIPS requirements and reduces the risk of outbreaks going unnoticed.
3. **Standardized Format:** eCR Now ensures that data is formatted according to CDC guidelines. It supports HL7 FHIR standards and enables MIPS PI credit.
4. **Alerts and Notifications:** Providers receive alerts for reportable conditions, ensuring prompt action. Additionally, eCR Now notifies public health authorities, enabling swift response.

The diagram (shown on pg.2) shows the process workflow for the Dynamic eCR Gateway. While the clinician interacts with the patient, the EHR system sends a notification to the eCR Now FHIR App via a REST Hook API, indicating that a potential reportable event has been detected. This notification usually contains Encounter and Patient IDs along with the FHIR URL where the patient data can be retrieved for further processing. If the event is reportable, the eCR Now app calls our Dynamic FHIR Server using a SMART System-to-System single patient API connection for patient data. Finally, the eCR Now app creates a CDA Report and sends it to the CDC.

The eCR Now app is responsible for keeping the codes updated and determining which codes are reportable.

### Conclusion

Dynamic Health IT's Dynamic eCR Gateway empowers providers to meet CDC reporting requirements efficiently. It combines our FHIR API with the eCR Now app. By automating data extraction, ensuring standardization, and enabling real-time transmission, the Dynamic eCR Gateway contributes to public health surveillance and healthcare provider responsiveness.

# Navigating Electronic Case Reporting Challenges

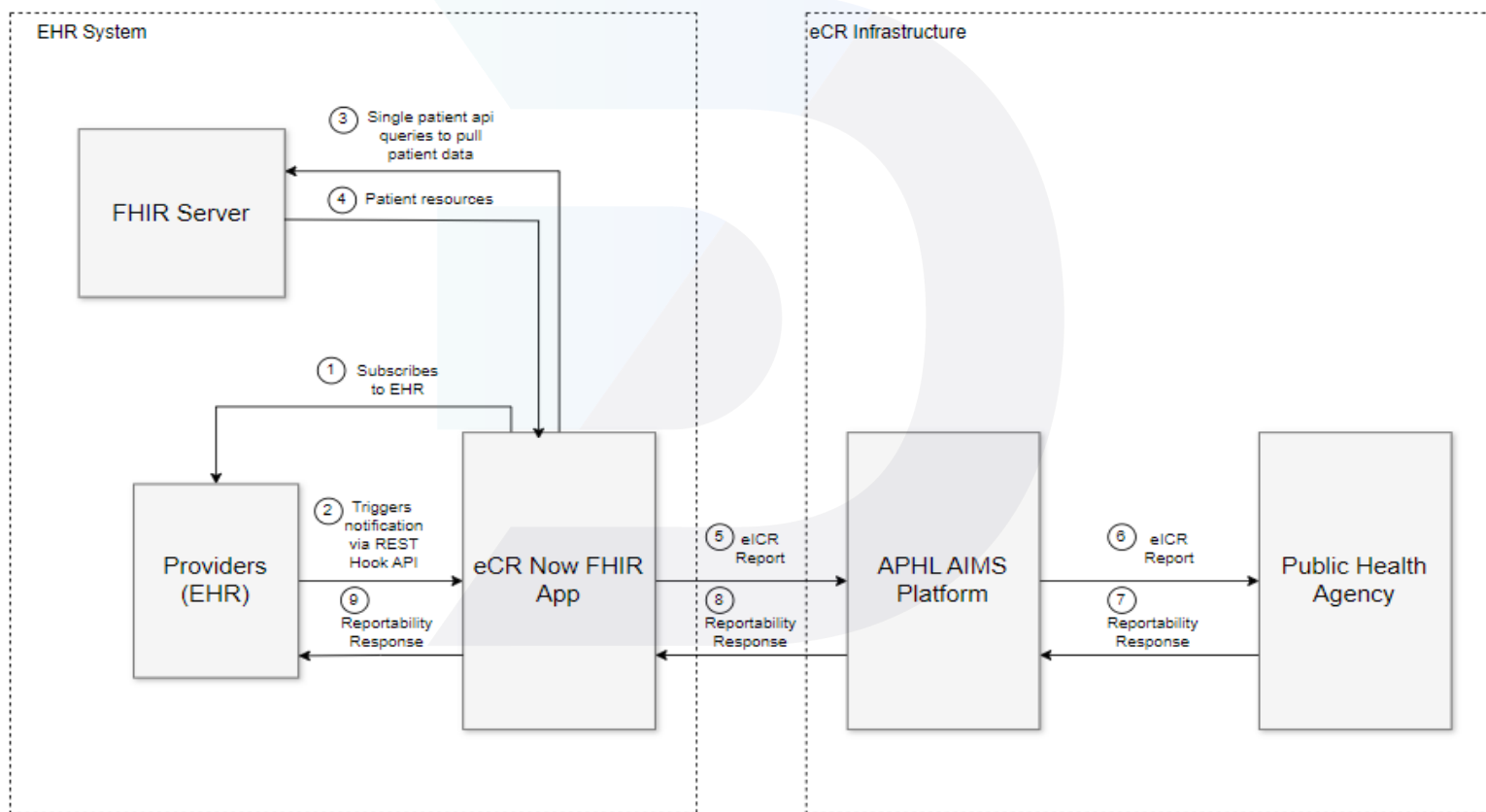
## A White Paper from Dynamic Health IT, Your Strategic Partner

Dynamic Health IT (DHIT) addresses the challenges of Electronic Case Reporting (eCR) through its Dynamic eCR Gateway. As eCR becomes a mandatory aspect of MIPS Promoting Interoperability, DHIT's solution streamlines the reporting process.

May 2024

### Dynamic eCR Gateway Workflow:

1. Subscribe to EHR
2. Triggers notification via REST Hook API
3. Single patient API queries to pull patient data
4. Patient resources gathered from Dynamic FHIR
5. eCR Now converts FHIR data into a Report
6. eCR report is delivered to the Public Health Agency
7. Response acknowledgement sent back to EHR



For more information about eCR Now and DHIT's solutions, visit Dynamic Health IT's website, [www.DynamicHealthIT.com](http://www.DynamicHealthIT.com) and [eCR Now FHIR APP](#).